

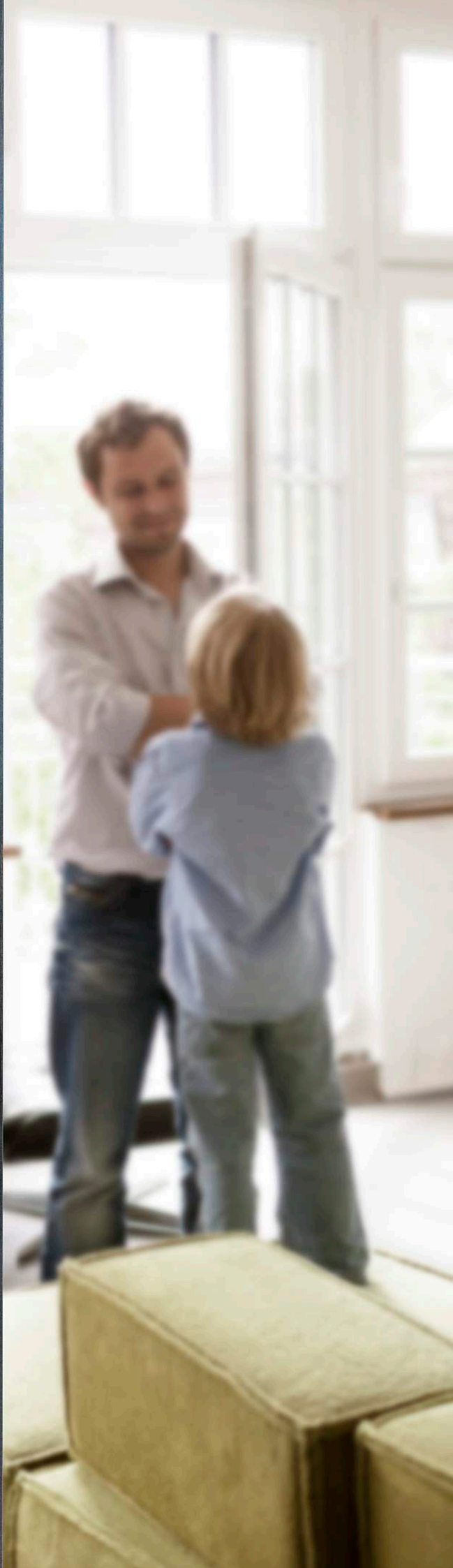
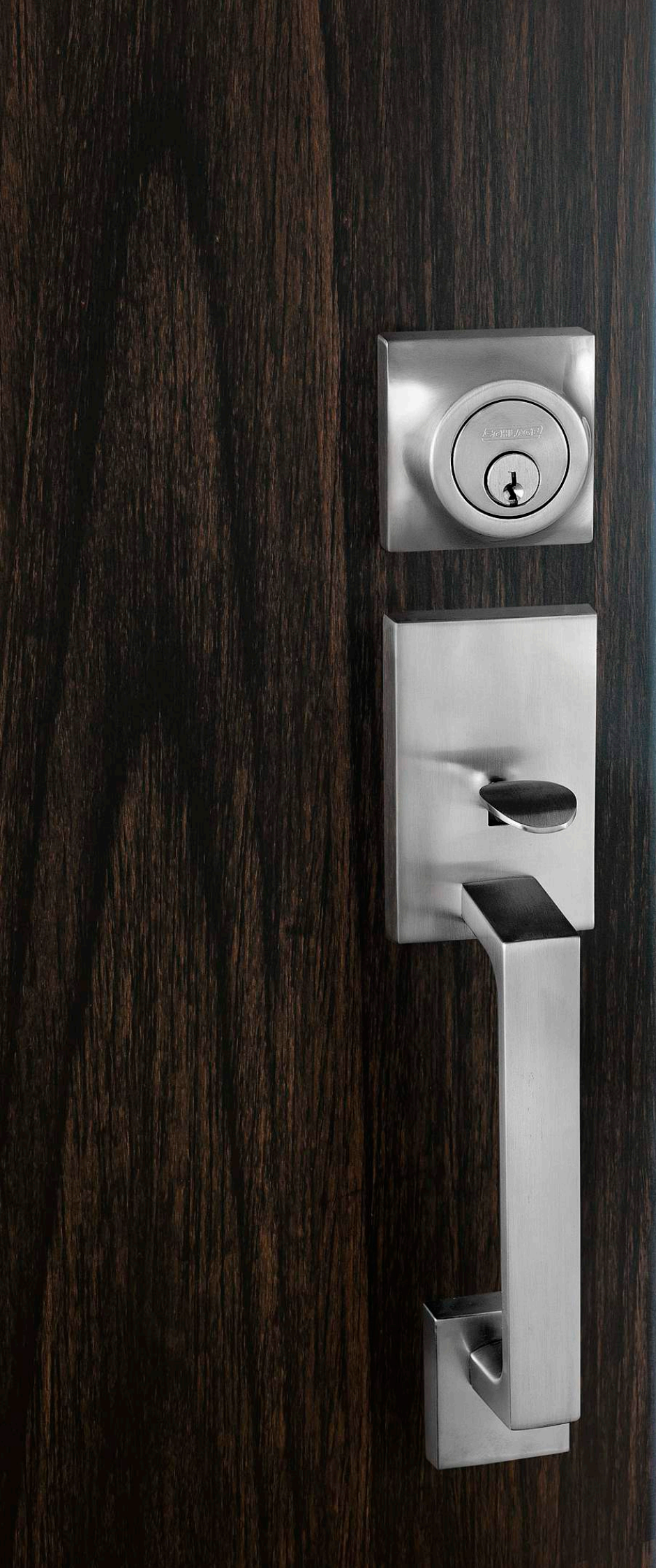


Open possibilities.



Residential Guide

One door. **Limitless potential.**



Contents

4 Introduction

6-9 Entrance Hardware

- 6 Schlage Pull Handles (Tubular)
- 7 Schlage Pull Handles (Solid)
- 8 Schlage ME Euro Mortice Locks
- 9 Schlage Euro Profile Cylinders
- 9 Schlage ME Euro Profile Cylinders

12-15 Keyless Entrance Hardware

- 12 Schlage Sense™ Smart Deadbolt
- 14 Schlage FE & BE Series
- 15 Schlage Digital Mechanical Lock

18-22 Levers, Knobs and Deadbolts

- 18 Schlage Medio Series
- 19 Schlage Grande Series
- 20 Schlage 7000 Series
- 21 Schlage 9000 Series
- 22 Schlage Verta™ Series
- 24 Schlage Regent Series Entrance Sets
- 24 Schlage Regent Series Deadbolts
- 25 Schlage Regent Series Knobs & Levers
- 26 Schlage F Series Entrance Sets
- 27 Schlage F Series Knobs & Levers
- 28 Schlage B Series Deadbolts

32-33 Aluminium Door Hardware

- 32 Schlage Stella® Sliding Door Lock
- 33 Schlage Restrictor Stays

36-38 General Hardware

- 36 Schlage Door Stops
- 37 Schlage Architectural Hinges
- 38 Schlage Sliding Door Hardware
- 38 Schlage General Hardware

40 Door Controls

- 40 Briton Door Controls

42 Handing and General Information

43 Reference

43 Finish Glossary

About Schlage

We believe that **style lives in the details**, because it's the details that bring everything together in a home.

Our door hardware, deadbolts and electronic locks provide **open possibilities** for homeowners to reflect their style.

Every day, Schlage creates solutions that bring our customer's visions to life. These solutions make homes and lives **smarter, safer and more beautiful.**

At the end of the day, **we're opening a lot more than just doors.**

Entrance hardware

A detail that makes a **statement.**



Schlage Trento

Schlage **Pull Handles (Tubular)**



Andor
● SSS



Trento
● SSS



Turin
● SSS



Corfu
● SSS

Overall Length (mm)
Fixing Centres (mm)

625
600

620
600

600
450

600
400



Proda
● SSS



Neptune
● SSS



Saturn
● SSS



Venus
● SSS



Verta™
● SSS

Overall Length (mm)
Fixing Centres (mm)

600
400

600
300

600
300

600
300

800
762



Albo
● SSS

Raphael
● SSS

Stella
● SSS

Overall Length (mm)	275
Fixing Centres (mm)	250

Overall Length (mm)	280
Fixing Centres (mm)	248

Overall Length (mm)	305
Fixing Centres (mm)	210

Technical Specifications	Accessories	Warranty
<ul style="list-style-type: none">- 304 Decorative grade stainless steel- 316 Marine grade stainless steel (Verta™ only)- Back to back. Sold in pairs. <p>Door Type</p> <ul style="list-style-type: none">- Timber- Metal- Glass <p>Door Thickness</p> <ul style="list-style-type: none">- 35mm - 50mm- Glass 8mm - 12mm	<p>Locks/Bolts</p> <ul style="list-style-type: none">- ME Series Lock Sets- Legge 990MF Mortice Deadlock	10 year finish

Schlage **ME Euro Mortice Locks**



ME60
Entrance Lock
● SSS

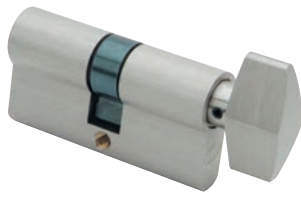


ME60
Roller Deadlock
● SSS

Technical Specifications	Accessories	Compatible Furniture	Warranty
Door Type <ul style="list-style-type: none">- Aluminium- Timber Door Thickness <ul style="list-style-type: none">- 32 - 42mm (When using standard 65mm cylinder with a 10mm escutcheon) Extended cylinders available	<ul style="list-style-type: none">- Escutcheons Cylinders (ordered separately) <ul style="list-style-type: none">- ME C4 5 or 6 Pin Euro- Schlage C 5 or 6 Pin Euro Rebate kits <ul style="list-style-type: none">- MERKSS Rebate kit for ME60- MERKRSS Rebate kit for ME60RL	<ul style="list-style-type: none">- Medio Series- 7000 Series- 9000 Series- Pull handle range- Verta™- Grande Series	10 year mechanical

Lock Specifications		
Lock ME60 Entrance Lock ME60 Roller Deadlock	Follower to turn centre 85mm	Backset 60mm 60mm

Schlage **Euro Profile Cylinders**



Cylinder and Turn

● SCP

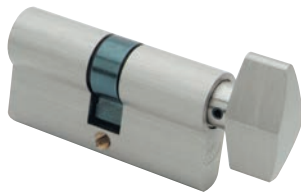


Double Cylinder

● SCP

Technical Specifications	Functions	Compatible Locks	Warranty
<ul style="list-style-type: none"> - Universal applications Keyway <ul style="list-style-type: none"> - Schlage C Keyway Keying Options <ul style="list-style-type: none"> - KA Keyed Alike - KD Keyed to Differ - RCK Residential Construction Keyed 	Cylinder and turn Double cylinder Half turn Half cylinder	<ul style="list-style-type: none"> - ME Series Euro Mortice Lock 	10 year mechanical

Schlage **ME Euro Profile Cylinders**



Cylinder and Turn

● SCP



Double Cylinder

● SCP

Technical Specifications	Functions	Compatible Locks	Warranty
<ul style="list-style-type: none"> - Universal applications Keyway <ul style="list-style-type: none"> - C4 Keyway Keying Options <ul style="list-style-type: none"> - KA Keyed Alike - KD Keyed to Differ 	Cylinder and turn Double cylinder Half turn Half cylinder Emergency release turn (Privacy)	<ul style="list-style-type: none"> - ME Series Euro Mortice Lock 	10 year mechanical

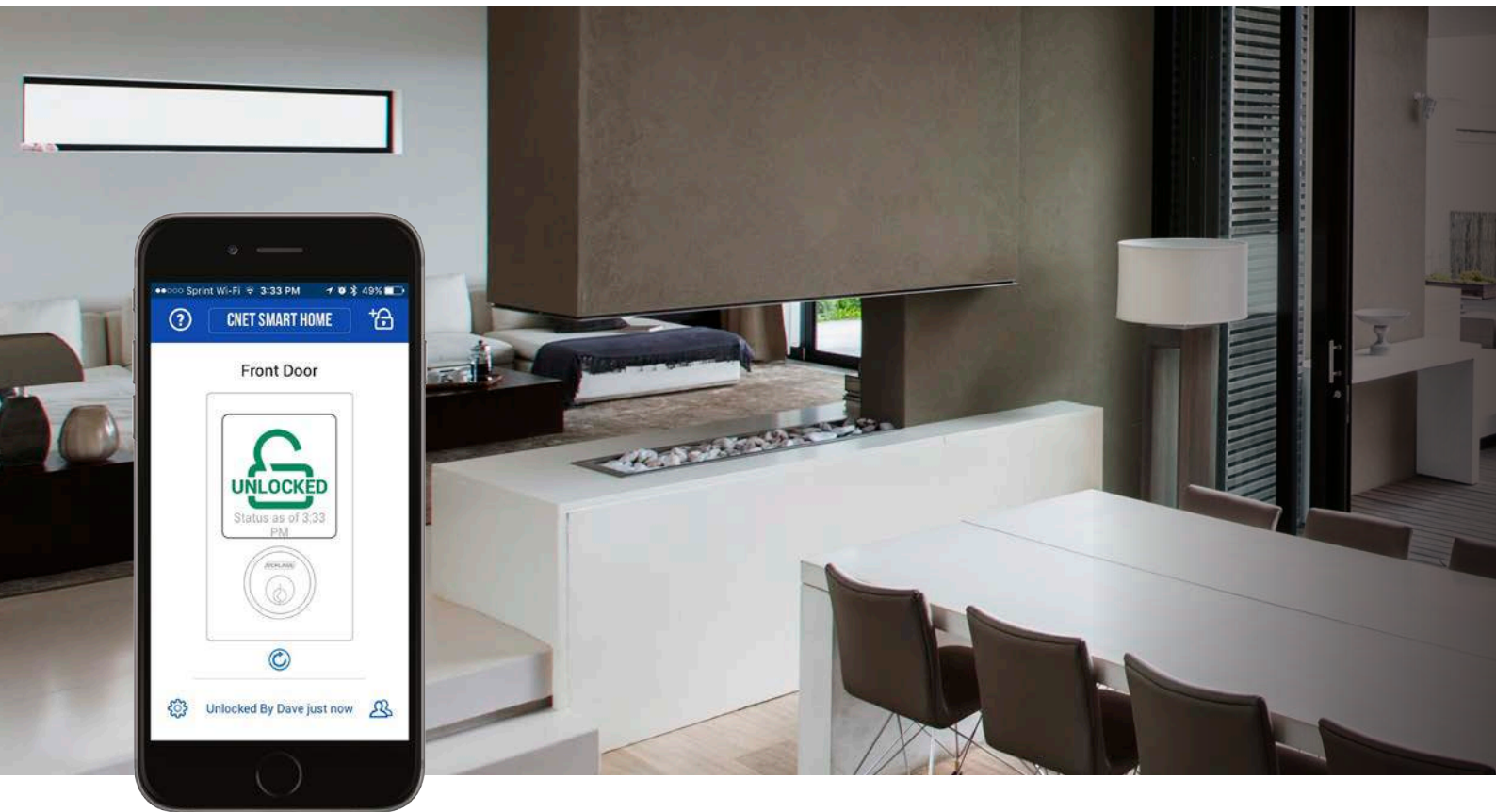
Endless possibilities to
transform any space with
Schlage's wide variety of styles
and innovative technology.

Keyless entrance hardware

Smart style. **Smarter thinking.**



Schlage Sense™ Smart Deadbolt



A smarter way in

Compatible with Apple HomeKit™ Technology, allows you to unlock your door by simply asking Siri on your iPhone®, iPad® or iPod touch®. That HomeKit™ compatibility also puts you in control of the rest of your home, giving you the power to set scenes for things like your lights, doors, and thermostats. Which means the Schlage Sense™ deadbolt doesn't just make your home smarter – it makes your whole life easier.

Features and Benefits

- Works with iPhone®, iPad® and iPod touch® by using Bluetooth® Smart technology
- Built-in alarm technology senses potential door attacks
- Illuminated, fingerprint-resistant touchscreen works in the rain and when wearing gloves
- Easy to set up and program using the Schlage Sense™ app
- The Schlage Sense™ Smart Deadbolt comes with a limited lifetime finish and mechanical warranty, and a limited three-year electronic warranty



Century
in Matte Black





Technical Specifications	Functions	Warranty
<ul style="list-style-type: none"> - Grade 1 security rating - Fingerprint resistant - Works in the rain and with gloves - Works with iPhone®, iPod® and iPod touch® - Built-in alarm - Illuminated touch screen - Easy installation and setup <p>Door Type</p> <ul style="list-style-type: none"> - Timber - Metal <p>Backset</p> <ul style="list-style-type: none"> - 60 - 70mm adjustable <p>Door thickness</p> <ul style="list-style-type: none"> - 35mm - 50mm - Extension kit available for doors 51mm - 57mm 	<p>Codes</p> <ul style="list-style-type: none"> - Up to 30 user codes <p>Communications</p> <ul style="list-style-type: none"> - Bluetooth® smart technology 	<p>Lifetime mechanical and finish</p> <p>3 year electronic</p> <p>Battery</p> <p>AAx4 included (approximately one year battery life)</p>

Schlage **FE & BE Series**



BE365 Plymouth

● SCP



FE575 Plymouth/Elan

● SCP



FE595 Plymouth/Latitude

● SNP



FE595 Plymouth/Elan

● SCP

Technical Specifications	Functions	Warranty
<ul style="list-style-type: none"> - Tested to one million cycles - Vandal resistant clutching design - 19 code capacity; 10 000 user code combinations - Mechanical override - Emergency exit feature - Locks can be re-keyed to match existing locks - 9-volt alkaline battery included <p>Door Type</p> <ul style="list-style-type: none"> - Timber - Metal <p>Backset</p> <ul style="list-style-type: none"> - 60mm or 70mm <p>Door Thickness</p> <ul style="list-style-type: none"> - 40mm - 45mm <p>Cylinder</p> <ul style="list-style-type: none"> - Schlage C 5 Pin 	<p>BE365 Keypad Entry Deadbolt</p> <ul style="list-style-type: none"> - Keyless access to home - Turn-lock feature allows user to lock and leave without key - Ideal for front, back and side entry doors where deadbolts are required <p>FE575 Keypad Entry with Auto-Lock</p> <ul style="list-style-type: none"> - Automatically re-locks five seconds after use - Ideal for use on doors leading to basement stairways, storage and utility rooms <p>FE595 Keypad Entry with Flex-Lock</p> <ul style="list-style-type: none"> - Allows users to choose whether door remains locked (with a code required for entry) or unlocked (no code required for entry) simply by rotating the inside thumb turn - Ideal for use on garage entry doors, home offices, storage rooms 	<p>Lifetime mechanical and finish 1 year electronic</p>



Schlage Digital Mechanical Lock

● SCP

Technical Specifications	Warranty
<ul style="list-style-type: none">- 14 digit keypad offers 8000 codes of 4 to 7 digits- Suitable for light duty and internal use only- Optional hold-open function <p>Door Thickness</p> <ul style="list-style-type: none">- 32mm - 50mm <p>Backset</p> <ul style="list-style-type: none">- 60mm <p>Door Type</p> <ul style="list-style-type: none">- Timber- Metal	10 year mechanical and finish

Carefully designed styles
that **embrace the possibilities**
and potential of every door
in your home.

Levers, knobs and deadbolts

A **first impression** that lasts.



7000 Series Angelo



Alba
● SCP



Centra
● SCP



Diva
● SCP

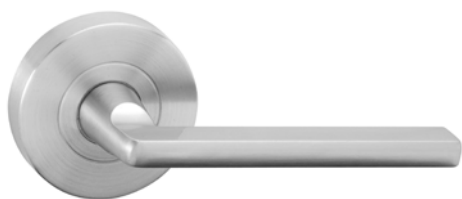


Mila
● SCP



Stella
(shown with privacy)
● SCP

Technical Specifications	Functions	Accessories	Warranty
Rose Specifications - Ø55mm x D12mm - Concealed Fixing Door Type - Timber - Metal Backset - 60mm (70mm backset available) - Suitable to use latch furniture with mortice locks and escutcheons Door Thickness - Furniture 32mm - 50mm - Passage 32mm - 50mm - Privacy 32mm - 42mm	Latch furniture Passage Privacy Dummy trim	Locks/Latches - Schlage 60mm Latchbolt - ME Mortice Lock (60mm) - Legge 990MF Mortice Lock Cylinders - ME C4 5 or 6 Pin Euro - Schlage 5 or 6 Pin Euro - Legge 990 Oval Cylinder Escutcheons - L30S round - L30SS square	10 year mechanical and finish


Alba

● SCP


Centra

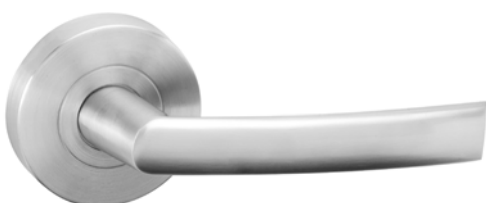
● SCP


Diva

● SCP


Mila

● SCP


Stella

● SCP

Technical Specifications	Functions	Accessories	Warranty
Rose Specifications <ul style="list-style-type: none"> - Ø65mm x D12mm - Concealed fixing Door Type <ul style="list-style-type: none"> - Timber - Metal Backset <ul style="list-style-type: none"> - 60mm - Suitable to use latch furniture with mortice locks and escutcheons Door Thickness <ul style="list-style-type: none"> - Furniture 32mm - 50mm - Passage 32mm - 50mm - Privacy 32mm - 42mm 	<ul style="list-style-type: none"> Latch furniture Passage Privacy Dummy trim 	Locks/Latches <ul style="list-style-type: none"> - Schlage 60mm Latchbolt - ME Mortice Lock (60mm) - Legge 990MF Mortice Lock Cylinders <ul style="list-style-type: none"> - ME C4 5 or 6 Pin Euro - Schlage 5 or 6 Pin Euro Escutcheons <ul style="list-style-type: none"> - L30S round - L30SS square 	10 year mechanical and finish

Schlage **7000 Series**



Albo
● SSS



Angelo
● SSS



Costa
● SSS



Dali
● SSS



Fattori
● SSS



Katz
● SSS



Vargas
● SSS



Vinci
● SSS



**Turn
Escutcheon**
● SSS



**Emergency Release
Escutcheon**
● SSS

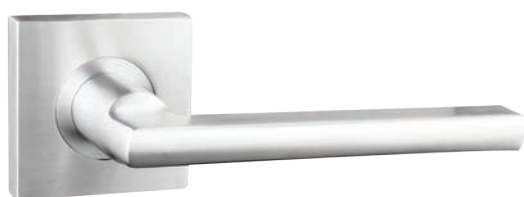


**Cylinder
Escutcheon**
● SSS

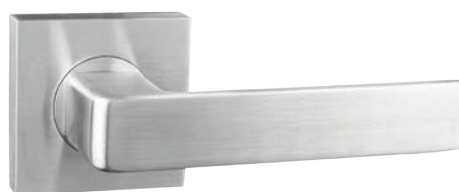


**Oval
Escutcheon**
● SSS

Technical Specifications	Functions	Accessories	Warranty
<p>Solid stainless steel levers</p> <p>Rose Specifications</p> <ul style="list-style-type: none"> - Ø55mm x D12mm - Concealed fixing <p>Door Type</p> <ul style="list-style-type: none"> - Timber - Metal <p>Backset</p> <ul style="list-style-type: none"> - 60mm (70mm available) - Suitable to use latch furniture with mortice locks and escutcheons <p>Door Thickness</p> <ul style="list-style-type: none"> - Furniture 35mm - 50mm - Passage 35mm - 50mm - Privacy 32mm - 42mm 	<p>Latch furniture</p> <p>Passage</p> <p>Privacy</p> <p>Dummy trim</p>	<p>Locks/Latches</p> <ul style="list-style-type: none"> - Schlage 60mm Latchbolt - ME Mortice Lock (60mm) - Legge 990MF Mortice Lock <p>Cylinders</p> <ul style="list-style-type: none"> - ME C4 5 or 6 Pin Euro - Schlage C5 or 6 Pin Euro - Legge 990 Oval Cylinder <p>Escutcheons</p> <ul style="list-style-type: none"> - 7008 Oval Cylinder - 7012 Euro Cylinder - 7007/7013 Turn (non-indicating/indicating) - 7009/7014 Emergency Release (non-indicating/indicating) - 7010/7015 Large Turn (non-indicating/ indicating) - 7020 Emergency Turn Set - 7054 Indicating Accessible Turn LH/RH 	<p>10 year mechanical and finish</p>



Albo
● SSS



Angelo
● SSS



Katz
● SSS



**Turn
Escutcheon**
● SSS



**Emergency Release
Escutcheon**
● SSS



**Euro Cylinder
Escutcheon**
● SSS



**Oval Cylinder
Escutcheon**
● SSS

Technical Specifications	Functions	Accessories	Warranty
<p>Solid stainless steel levers</p> <p>Rose Specifications</p> <ul style="list-style-type: none"> - 57mm x D12mm - Concealed fixing <p>Door Type</p> <ul style="list-style-type: none"> - Timber - Metal <p>Backset</p> <ul style="list-style-type: none"> - 60mm (70mm available) - Suitable to use latch furniture with mortice locks and escutcheons <p>Door Thickness</p> <ul style="list-style-type: none"> - Furniture 35mm - 50mm - Passage 35mm - 50mm - Privacy 32mm - 42mm 	<p>Latch furniture</p> <p>Passage</p> <p>Privacy</p> <p>Dummy trim</p>	<p>Locks/Latches</p> <ul style="list-style-type: none"> - Schlage 60mm Latchbolt - ME Mortice Lock (60mm) - Legge 990MF Mortice Lock <p>Cylinders</p> <ul style="list-style-type: none"> - ME C4 5 or 6 Pin Euro - Schlage C5 or 6 Pin Euro - Legge 990 Oval Cylinder <p>Escutcheons</p> <ul style="list-style-type: none"> - 9008 Oval Cylinder - 9012 Euro Cylinder - 9007/9013 Turn (non-indicating/indicating) - 9009/9014 Emergency Release (non-indicating/indicating) - 9015 Large Turn (non-indicating/indicating) - 9020 Emergency Turn Set - 9054 Indicating Accessible Turn LH/RH 	<p>10 year mechanical and finish</p>

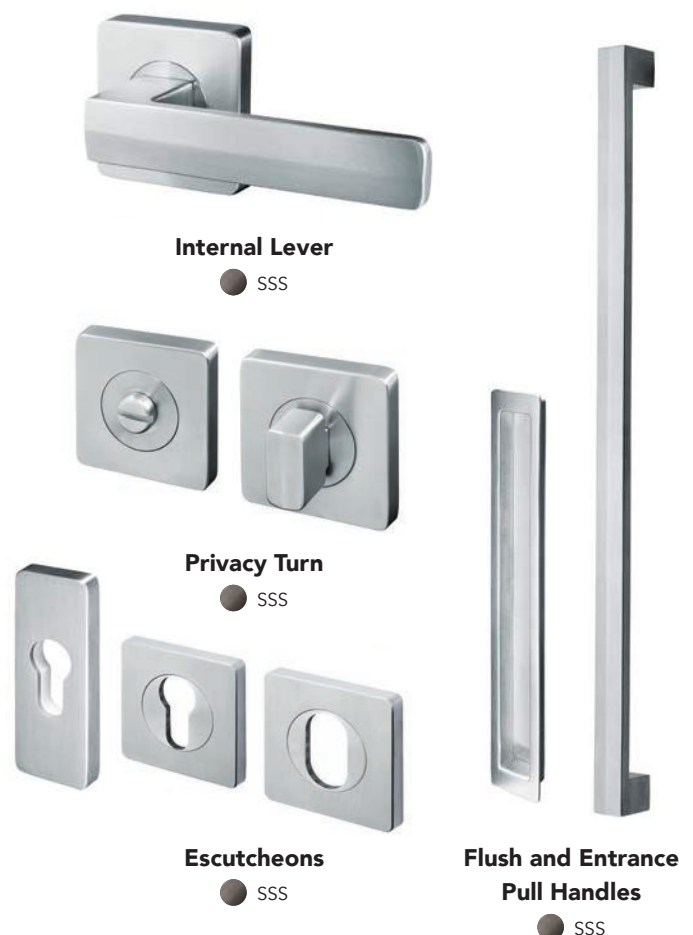


Designer style

Verta™ reinvents the classic with contemporary design. Stemming from modern trends, Verta™ blends beautiful form with designer functionality.

Verta's™ design features set a new standard for innovative style. Architectural lines create surfaces that reflect light in every direction; tactile surfaces surprise and delight; lineal planes soften to curved edges.

Each element of Verta has been sourced, crafted and finished by experts. Constructed from the highest-quality, marine-grade 316 stainless steel, Verta is manufactured and finished with watch-maker precision. Tested to over 200,000 cycles, Verta is an investment in style for now and the future.





Verta™ Lever

Technical Specifications	Functions	Accessories	Warranty
<ul style="list-style-type: none"> - 316 Marine grade stainless steel Rose Specifications <ul style="list-style-type: none"> - 57mm x 57mm x D12mm Door type <ul style="list-style-type: none"> - Timber - Metal Backset <ul style="list-style-type: none"> - 60mm (70mm available) - Suitable to use latch furniture with mortice locks Door thickness <ul style="list-style-type: none"> - 35mm-50mm 	<ul style="list-style-type: none"> Latch furniture Passage Privacy turn Dummy trim 	Locks/latches <ul style="list-style-type: none"> - Schlage 12000 Passage Latch - ME Mortice Lock (60mm) - Schlage 12081 Tubular Bolt (privacy turn only) - Legge 990MF Mortice Lock Escutcheons <ul style="list-style-type: none"> - Oval cylinder - Euro cylinder - Turn - Emergency 	<ul style="list-style-type: none"> 25 year finish 10 year mechanical

Verta™ Entrance Pull Handle

Technical Specifications	Accessories	Warranty
<ul style="list-style-type: none"> - 316 Marine grade stainless steel - 800mm length Door type <ul style="list-style-type: none"> - Timber - Metal Door thickness <ul style="list-style-type: none"> - 35mm-50mm Fixing <ul style="list-style-type: none"> - Fixing centres 762mm - Back to back or single. Sold in pairs 	Locks/Bolts <ul style="list-style-type: none"> - ME Series Roller Deadbolt and Cylinder (available as a complete lockset) - Legge 990MF Mortice Deadlock Cylinders <ul style="list-style-type: none"> - ME C4 Euro - Schlage 5 or 6 Pin Euro - 990 C4 Oval 	<ul style="list-style-type: none"> 25 year finish 10 year mechanical

Schlage **Regent Series**

Entrance Sets



**Monaco Entrance Set
with Denver Knob***

● SCP



**Boston Entrance Set
with Denver Knob***

● SCP

* Gripset knob interchangeable with any Regent Series dummy trim lever. Purchase separately.

Deadbolts



Regent Boston

● SCP



Regent Denver

● CP ● PB ● SNP ● SSS

Technical Specifications	Functions	Accessories	Warranty
<p>- Can be keyed alike to other Schlage locksets</p> <p>Door Type</p> <p>- Timber</p> <p>- Metal</p> <p>Backset</p> <p>- 60mm or 70mm, 127mm available</p> <p>Door Thickness</p> <p>- 35mm - 50mm</p>	<p>Double cylinder (key/key)</p> <p>Single cylinder (key/turn)</p>	<p>Furniture</p> <p>- Regent Series</p> <p>- Pull handle range</p>	<p>25 year mechanical</p> <p>10 year finish</p>

Knobs and Levers



Denver

● CP ● PB ● SSS



Jupiter

● SCP ● SNP



Rubens

● SCP ● SNP



Leonardo

● SCP ● SNP



Boston

● SCP



Orlando

● SCP

Technical Specifications	Functions	Accessories	Warranty
<ul style="list-style-type: none"> - Triple option square, radius and drive in latch <p>Rose Specifications</p> <ul style="list-style-type: none"> - Ø65mm x D26mm - 60mm x 60mm x 26mm (square) - Concealed fixing <p>Door Type</p> <ul style="list-style-type: none"> - Timber - Metal <p>Backset</p> <ul style="list-style-type: none"> - 60mm or 70mm, 127mm available <p>Door Thickness</p> <ul style="list-style-type: none"> - 35mm - 50mm 	<ul style="list-style-type: none"> Entrance Passage Privacy Dummy trim 	<ul style="list-style-type: none"> - 127mm latch - Regent key blanks - Rebate kit - Strike plate 	<ul style="list-style-type: none"> 25 year mechanical 10 year finish

Entrance Sets



**Addison Entrance Set
with Accent Lever**
● SNP



Accent



**Camelot Entrance Set
with Georgian Knob**
● AB



Georgian



**Century Entrance Set with Orbit or
Plymouth Knobs, or Flair Lever**
● SCP



Orbit



Plymouth



Flair



**Plymouth Entrance Set
with Accent Lever**
● SNP
or Plymouth Knob
● PB ● SCP



Accent



Plymouth

Knobs and Levers

Georgian

● AB


Orbit

● SCP


Plymouth

● PB ● SCP


Accent

● SNP


Elan

● SCP


Flair

● SCP


Latitude

● SCP


Manhattan

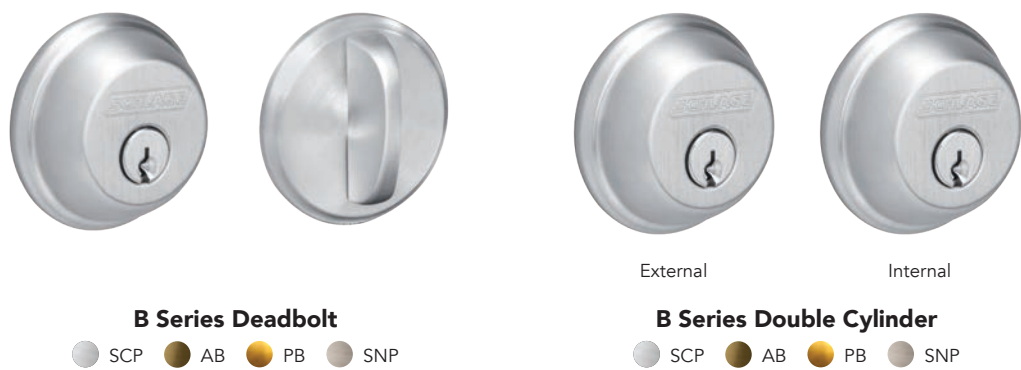
● SCP


Merano

● SCP

Technical Specifications	Functions	Accessories	Warranty
Rose Specifications: - Ø65mm x D12mm Door Type: - Timber - Metal Backset: - 60mm or 70mm, 127mm available Door Thickness: - 35mm - 44mm knob - 36mm - 44mm lever - 41mm - 51mm entrance set	Combination set (Plymouth knob with B62N Deadbolt) Entrance lock Passage latch Privacy latch Dummy trim	- 127mm latch - Rebate kit	Lifetime mechanical Lifetime finish on SNP and PB 10 year finish on AB and SCP

Schlage **B Series Deadbolts**



Technical Specifications	Functions	Accessories	Warranty
<ul style="list-style-type: none">- Increased bolt size and bolt engagement offers maximum kick-in resistance- Anti-pick shield- SNAP & STAY™ feature for hands-free installation- Larger thumb turn for easier grip- Contoured edges for added style- Can be keyed alike to other Schlage locksets <p>Door Type</p> <ul style="list-style-type: none">- Timber- Metal <p>Backset</p> <ul style="list-style-type: none">- 60mm or 70mm, 127mm available <p>Door Thickness</p> <ul style="list-style-type: none">- 35mm - 44mm (extension kit available)	<p>Double cylinder (key/key)</p> <p>Single cylinder (key/turn)</p>	<ul style="list-style-type: none">- 127mm bolt- Rebate kit	<p>Lifetime mechanical</p> <p>Lifetime finish on SNP and PB</p> <p>10 year finish on AB and SCP</p>



F Series Latitude Lever

Schlage leads the way in door
hardware style and innovation,
creating new possibilities every
day, for every home.

Aluminium door hardware

Opening more than just doors



Schlage Stella™
Sliding Door Lock

Schlage **Stella® Sliding Door Lock**

Standard



Deadlocking
● B



External locking
● B



Locking by snib only
● B



Dummy
● B

Slimline



Deadlocking
● B



External locking
● B



Locking by snib only
● B



Dummy
● B

Schlage Stella® Design Features and Benefits

- TwinSecure®** Adds security through twin activating jaws / provides locking by snib or key / red-flags when the door is unlocked
- SlamStop®** Protects locking jaws from accidental damage / offers childproofing / prevents accidental lockout
- ErgoDesign®** Suits left or right hand door applications / improves grip and feel of handle / favoured through rigorous consumer testing
- MultiFix®** Adds security through adjustable concealed strike with stainless steel receiver plate and multiple fixing points / suits new and retrofit applications
- MultiFunction®** Provides non key locking, key locking and dummy

Technical Specifications	Functions	Accessories	Warranty
Door Thickness - 30mm - 50mm	Deadlocking External locking Locking by Snib only Dummy	Cylinder - Schlage 6 Pin C flute brass - C4 Pin cylinder available as an option	10 year mechanical and finish



Detachable
● SSS



Non-Detachable
● SSS

Technical Specifications	Functions	Warranty
Available in detachable or non-detachable models	Restricts window opening to 150mm	10 year mechanical and finish

Bring every room's potential
to life with **the perfect**
hardware style and finish.

General hardware

The **finishing touch.**



Schlage Cavity Sliders



Schlage **Door Stops**

Wall Mounted



Model	Description	Size	Warranty
434	Door Stop	78mm Projection	10 year finish
438	Door Stop	85mm Projection	
440	Door Stop	85mm Projection	
450	Wall Mounted Square Post Door Stop	110mm Projection	
460	Wall Mounted Round Post Door Stop	110mm Projection	
470	Wall Mounted Square Post Door Stop	85mm Projection	
435HO	Magnetic Hold Open Door Stop	78mm Projection	
12841	Hat and Coat Hook	85mm Projection	
13001	Wall Mounted Door Stop	75mm Projection; 50mm Diameter	
13002	Wall Mounted Door Stop	75mm Projection	
13003	Wall Mounted Square Post Door Stop	83mm Projection	

Latch Back



Model	Description	Size	Warranty
19033	Latch Back Square Door Stop	75mm Projection	10 year finish
19035	Latch Back Round Door Stop	75mm Projection	

Floor Mounted



12801

ALUM



12802

SSS



12805

SSS



12901

SCP



19026

SNP



19030

SNP

Model	Description	Size	Warranty
12801	Floor Mounted Door Stop	50mm Diameter	10 year finish
12802	Floor Mounted Door Stop	32mm Diameter	
12805	Floor Mounted Square Door Stop	40mm Square	
12901	Floor Mounted Dome Door Stop	46mm Diameter	
19026	Floor Mounted Round Door Stop	40mm Height	
19030	Floor Mounted Square Door Stop	40mm Height	

Architectural Hinges



13222

SSS



13225

SSS



13227

SSS



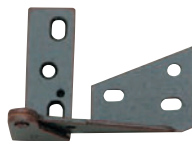
401

CP FP



229

AB BB BBRZ



409

FP



416

SA



603

FP

Model	Description	Size	Warranty
13222-02	Broad Butt Ball Bearing Hinge	100mm x 75mm	10 year finish
13222-04	Broad Butt Ball Bearing Hinge	100mm x 100mm	
13225	Fast Fix Ball Bearing Hinge	100mm x 68mm	
13227	Rising Butt Hinge	102mm x 76mm	
401	Double Acting Spring Hinge	100mm or 150mm	
229	Self Closing Cabinet Hinge	38mm x 34mm	
409	Flush Overlay Hinge		
416	Flush Fixed Pin	100mm x 50mm	
603	Steel Butterfly Hinge	36mm x 44mm	

Schlage **Sliding Door Hardware**



Privacy Sliding Cavity Door Set

● SCP



Cavity Door Flush Pull

● SCP



Passage Sliding Cavity Door Set

● SCP



1961

● SSS



1964

● SSS



46-100

● SCP ● SNP



46-101

● SCP ● SNP

Model	Description	Warranty
46-100	Round passage sliding cavity door set	10 year mechanical and finish
46-101	Round privacy sliding cavity door set	
1961	Square passage sliding cavity door set	
1964	Square privacy sliding cavity door set	
46-201	Passage Sliding Door Latch	
46-301	Privacy Sliding Door Latch	
	Flush Pull 120mm x 35mm x 12.5mm	
	Flush Pull 120mm x 35mm x 12.5mm	
	Cavity Slider Privacy Latch	
	Cavity Slider Privacy Pull	

Schlage **General Hardware**



RRB-01

● PB ● SCP



F178

● PB ● SCP



DV004

● CP ● SCP



Magnetic Door Catch

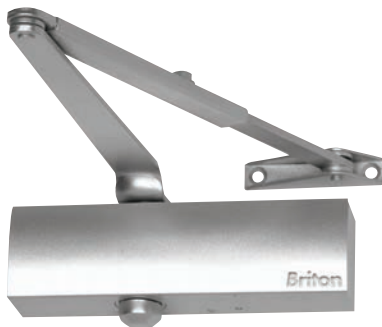
● CP

Model	Description	Warranty
RRB-01	Reverse Barrel Bolt	10 year mechanical and finish
F178	Roller Catch	
DV004	Door Viewer	
	Magnetic Door Catch	

Door controls

Add **convenience and safety.**





200 Series Door Closer

● SE

Technical Specifications	Functions	Accessories	Warranty
<ul style="list-style-type: none"> - Universal application fits standard, top jamb and parallel arm installations - European style trim cover - Independent adjustable valves for Backcheck, Closing and Latching speeds <p>Door Type</p> <ul style="list-style-type: none"> - Interior, Timber or Metal <p>Closer Strength</p> <ul style="list-style-type: none"> - Size 3 	Regular (REG)	- Hold Open Arm (HO)	5 year mechanical



1120 Series Door Closer

● SE



1130 Series Door Closer

● SE

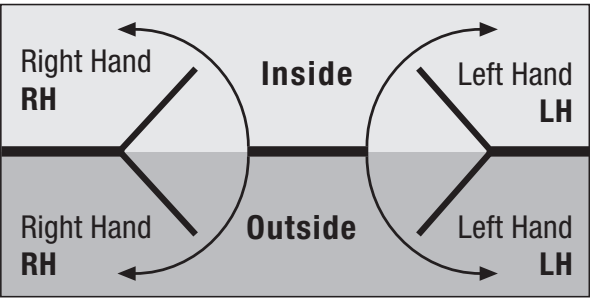
Technical Specifications	Functions	Accessories	Warranty
<ul style="list-style-type: none"> - Universal application fits standard, top jamb and parallel arm installations - Independent adjustable valves for Backcheck, Closing and Latching speeds - Non-handed <p>Door Type</p> <ul style="list-style-type: none"> - Interior and Exterior, Timber or Metal - Supplied with Trim Plate, SSS Cover available <p>1120 Closer Strength</p> <ul style="list-style-type: none"> - 1120B 2-4 Adjustable - 1120H0 2-4 Adjustable - 1120T 1-3 Adjustable <p>1130 Closer Strength</p> <ul style="list-style-type: none"> - 1130BDA 2-5 Adjustable - 1130BT 1-4 Adjustable 	<p>1120</p> <p>Regular (REG)</p> <p>Hold Open (HO)</p> <p>Track Function</p> <p>1130</p> <p>Regular (REG)</p> <p>Hold Open (HO)</p> <p>Track Function</p>	<ul style="list-style-type: none"> - Hold Open Arm (HO) - Track Arm (T) - Parallel Arm Bracket (PA) - Adaptor Plate (DP) - Parallel Arm Drop Plate (DPPA) 	10 year mechanical



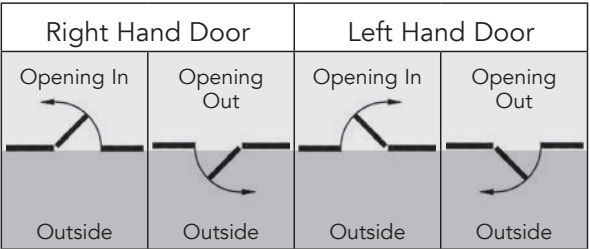
Schlage Addison Entrance Set

Handing and General Information

Door Handing Guide



Hinge Handing Guide (Model 13227)

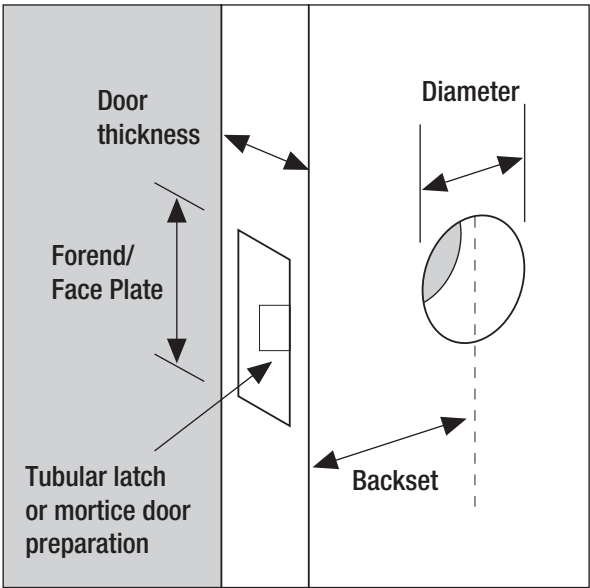


Common Terms

Door Preparation - A term used for the cut-outs or holes made to the door for the particular lock being installed.

Backset - The distance from the edge of the door to the centre line of prep in door.

Door Thickness - The measurement from outside front through to outside back of door. All locks have a minimum / maximum door thickness which they will fit.



Building Partnership Programme

Built around the architectural hardware requirements for new homes (essentially the door furniture and locks), the Building Partnership Programme is a mutually beneficial arrangement between you, the hardware merchant and Allegion. It is also a response to the particular desire by building companies for quality, well designed products, robust warranties, simple but effective key control, and time-saving installation.

Services

Scheduling – A comprehensive door schedule specification service is provided. Door hardware schedules are available with no obligation.

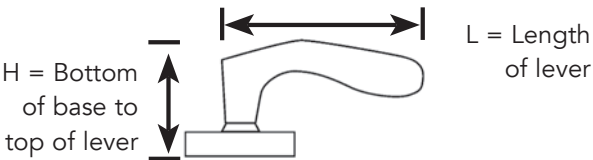
Residential Construction Keying - RCK system, involves a single key, replicated to be used by tradesmen for all homes during the construction phase. Building companies will be supplied 25 keys free (additional keys by negotiation), which can be reused on future houses/apartments. Each building company receives a personalised RCK system, so no two building companies have the same keys. When the new homeowner takes over the house, they are presented with their own keys, which when used automatically resets the lock cylinder, making the RCK inoperable and providing the homeowner with their own unique combination.

Master Keying – Master Keying is a method of controlling access through a building. A key schedule is prepared from provided floor plans. Includes a key tracking system which locates keys and locks and keeps a secure procedure on what keying has been undertaken. Security is based on a system where one lock has its own key. This key will not operate any other locks in the system however where all locks are in the same system the locks can be operated by the one master key.

Keyed Alike – KA - More than one lock being operated by the same key.

Keyed To Differ – KD – One lock is opened with a single key

Lever Dimension Guide



Finish Abbreviations

AB	Antique Brass
ALUM	Aluminium (US-689, SP28, MAL)
BB	Bright Brass
BBRZ	Blackened Bronze
Black	Black Powder Coated
CP	Chrome Plate (US-625)
PB	Polished Brass (US-605)
SA	Satin Aluminium
SCP	Satin Chrome Plate (US-626, US26D)
SE	Sprayed Silver
SNP	Satin Nickel Plate (US-619)
SSS	Satin Stainless Steel (US-630, US32D)

Product Application Classification

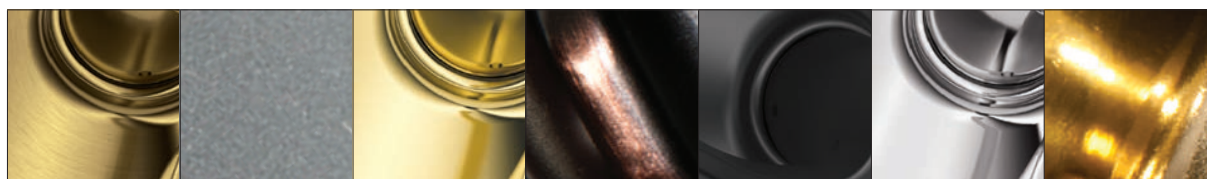
Residential and Light Commercial - Moderate use. Typical applications include residential homes, apartments and low traffic offices.

Commercial - Moderate to high traffic flow. Typical applications include classrooms, storerooms, entrance / fire applications.

Heavy Commercial - Excessive high usage / high security subject to abuse. Typical applications include prisons, stairwell doors and air pressure differential.

Finish Glossary

These colours are indicative only, subject to limitations in the printing process.



AB ALUM BB BBRZ BLACK CP PB
Antique Brass Aluminium Bright Brass Bronze Black Chrome Plate Polished Brass



SA SCP SE SNP SSS
Satin Aluminium Satin Chrome Plate Silver Satin Nickel Plate Satin Stainless Steel

About Allegion™

Allegion (NYSE: ALLE) is a global pioneer in the field of safety and security. We keep people and their property safe, wherever they are, bringing together simple solutions and advanced technology. Allegion is a \$2 billion company, with products sold in almost 130 countries.

For more, visit www.allegion.co.nz / www.allegion.com.au

Brio ■ <FSH> ■ LCN ■ LEGGE ■ SCHLAGE



For over 95 years Schlage has provided homeowners with innovative quality security products. Today, Schlage offers home security solutions from a wide selection of mechanical and electronic locks and accessories in touch with modern lifestyles.



Allegion Australia

Freephone 1800 098 094
Freefax 1800 098 095
Email auinfo@allegion.com

Allegion New Zealand

Freephone 0800 477 869
Freefax 0800 477 868
Email nzinfo@allegion.com

NZRESI 0617
© 2017 Allegion

